

Load cells

Mounting kits

MH MOUNTING KIT



Easy to assemble

Adjustable in height to provide the perfect flatness of the system in a simple and immediate way thanks to the use of TESTER 1008

Anti-tilting function included

Stainless steel made AISI 304 or AISI 316 (option on request)

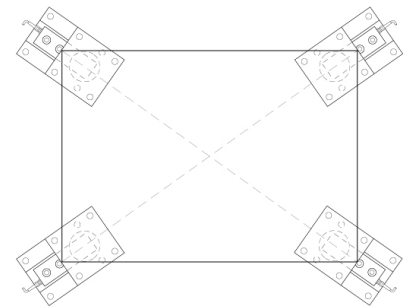
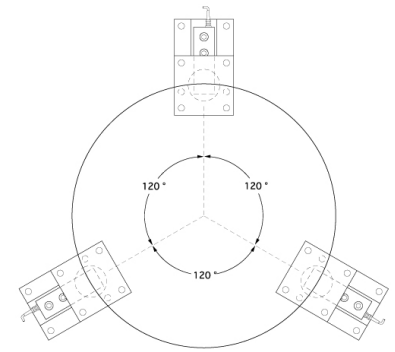
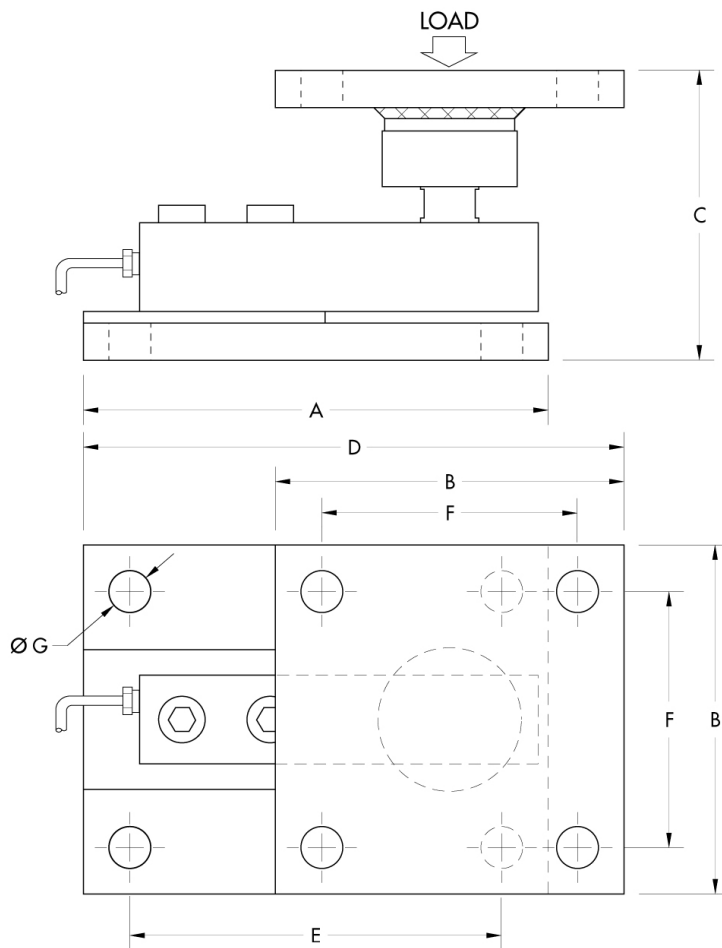
TECHNICAL CHARACTERISTICS MH MOUNTING KIT

MH1-AS:	For 65023 load cells 125÷250 kg capacity / SB 75÷250 kg
-	Nickel plated steel
MH1-SS:	For 65023 load cells 125÷250 kg capacity / SB 75÷250 kg
-	AISI 304 stainless steel construction
MH2-AS:	For load cells 65023, 65083, 350 capacity 300÷2000 kg
-	Nickel plated steel
MH2-SS:	For load cells 65023, 65083, 350 capacity 300÷2000 kg
-	AISI 304 stainless steel construction
MH3-AS:	For 65083 load cells 3000÷5000 kg capacity
-	Nickel plated steel
MH3-SS:	For 65083 load cells 3000÷5000 kg capacity
-	AISI 304 stainless steel construction
MH4-AS:	For 350 load cells 3000÷5000 kg capacity
-	Nickel plated steel
MH4-SS:	For 350 load cells 3000÷5000 kg capacity
	AISI 304 stainless steel construction

Load cells

Mounting kits

MH MOUNTING KIT



KIT	CAPACITY	A	B	C	D	E	F	G
MH1	75÷250	150	100	91÷94	181,6	120	70	13
MH2	300÷2000	150	100	98÷101	181,6	120	70	13
MH3	3000÷5000	200	150	120÷123	248,4	160	110	18
MH4	3000÷5000	200	150	130÷133	248,4	160	110	18