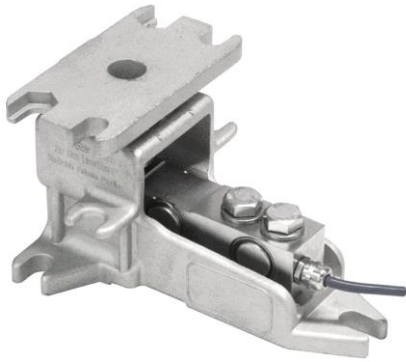


Load cells

Shear beam load cells

Levermount



Levermount is the most recent and innovative mechanical system of load cells assembly for industrial weighing systems

IP68/69

Stainless steel load cells, OIML certified C3

Its basis with three fixing points guarantees maximum stability

The kit is easily adjustable for the radial and tangential mounting

Not hinder the normal movements of expansion and contraction of the tank

Permits raising of the tank/vessel autonomously without the use of a jack

TECHNICAL CHARACTERISTICS LEVERMOUNT

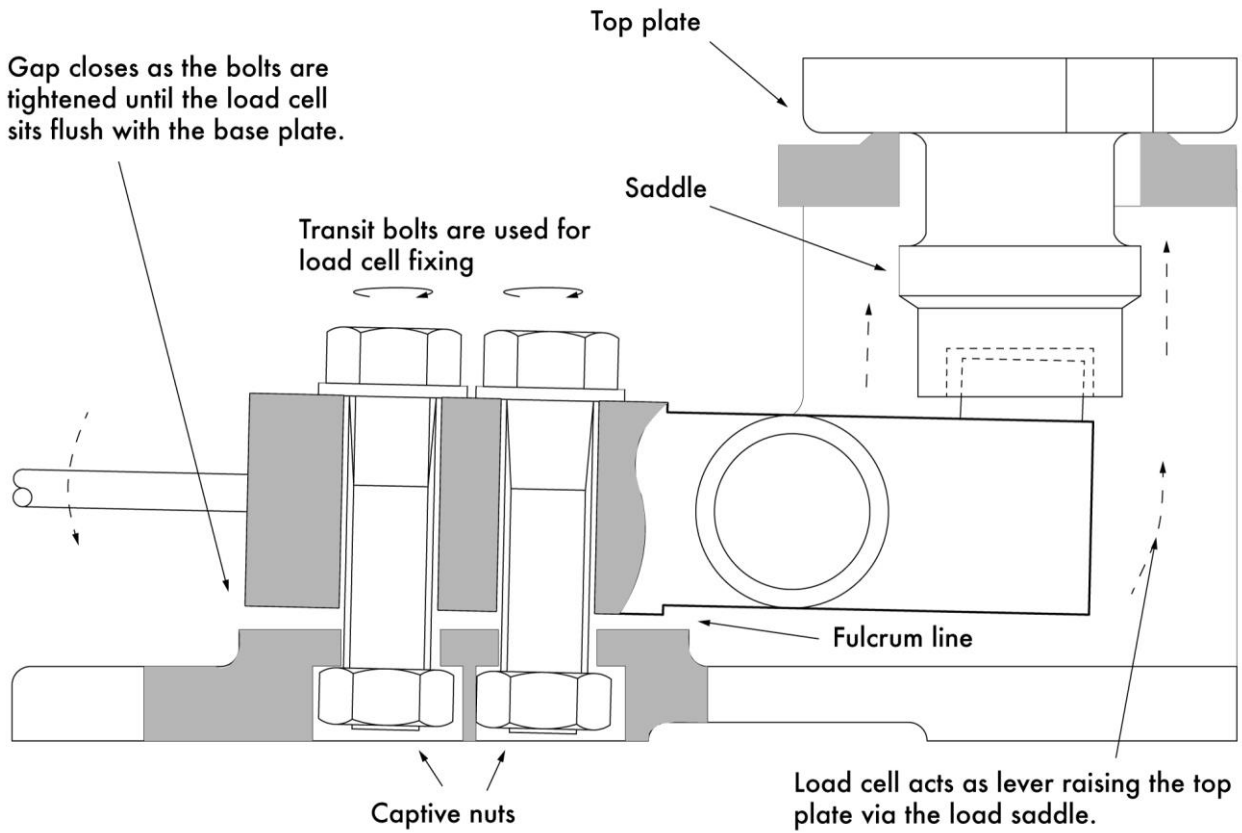
| | |
|---|--|
| Rated load (R.L.): | 10, 20, 50, 100, 200, 250, 300, 500, 1000, 1500, 2000, 3000, 5000 Kg |
| Combined error: | < ±0.017% of R.O |
| Repeatability | < ±0.015 % of R.O. |
| Creep (30 minutes): | < ±0.016% of R.O. |
| Safe overload: | 150% of R.L |
| Ultimate overload: | 300% of R.L. |
| Recommended input: | 5÷15 Vcc/ca |
| Input resistance: | 400 ± 20 Ohms |
| Output resistance: | 350 ± 3 Ohms |
| Insulation resistance: | > 5000 M Ohms @ 100 Vdc |
| Rated output (R.O.): | 2 ± 0.1% mV/V |
| Zero balance: | < ±1%SN (20÷200 Kg) < ±2%SN (300÷5000 Kg) |
| Temperature range: | -20÷ +70°C |
| Compensated temperature range: | -10 ÷ +40°C |
| Temp. effect (-10° to +50°C) on zero balance: | < ±0.010%SN/5°C |
| Temp. effect (-10°C to +50°C) on output: | < ±0.006% SN/5°C |
| Deflection | 0.2÷0.4 mm |
| Degree of protection: | IP68 |
| Material: | Stainless steel |
| Electrical connection: | 4 conductors shielded cable; length 6 m |
| Precision class: | 3000 n. OIML |
| Clamping force: | 300÷2000 kg PN: 136 Nm 3000÷5000 kg PN: 205 Nm |



Load cells

Shear beam load cells

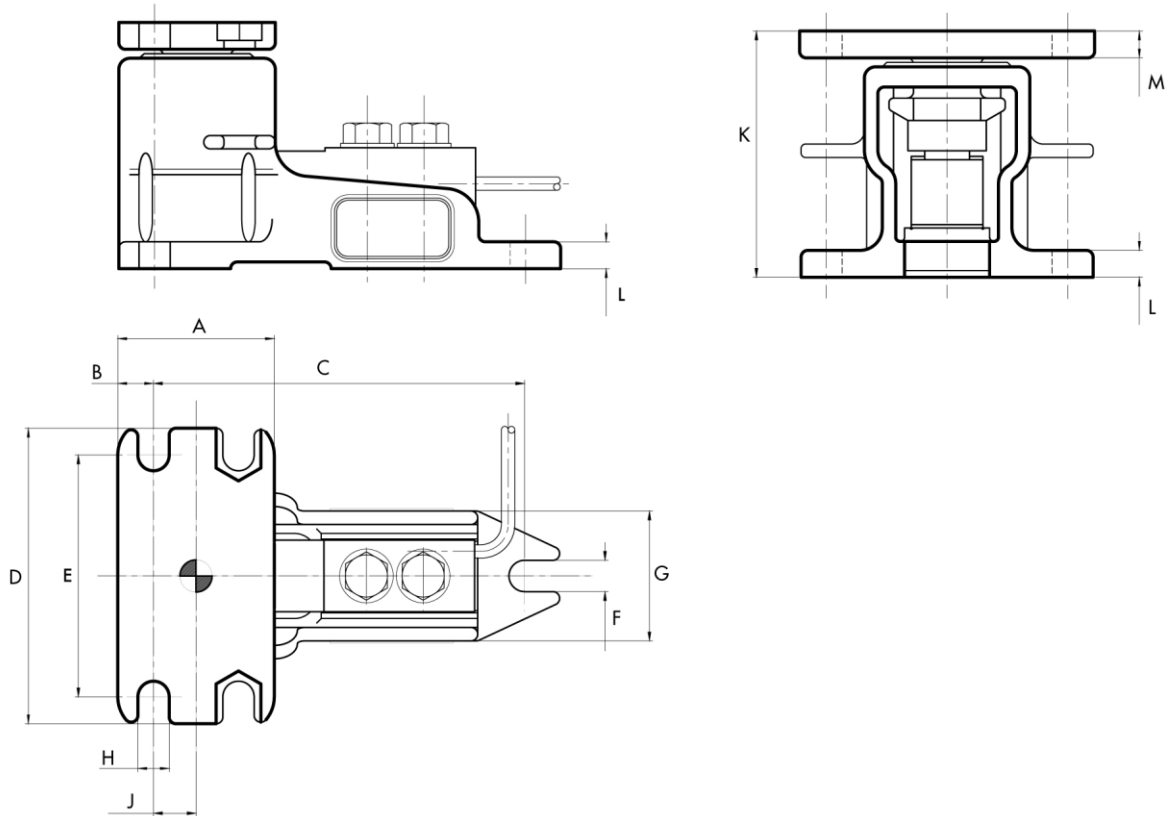
Levermount



Load cells

Shear beam load cells

Levermount



| Weight (kg) | A | B | C | D | E | F | G | H | J | K | L | M |
|----------------------|-----|----|-----|-----|-----|----|----|----|----|-----|----|----|
| 20, 50, 100, 200 | 70 | 16 | 147 | 100 | 80 | 9 | 55 | 9 | 19 | 80 | 7 | 8 |
| 300, 500, 1000, 2000 | 70 | 16 | 168 | 132 | 108 | 14 | 60 | 14 | 19 | 110 | 12 | 12 |
| 3000, 5000 | 100 | 25 | 225 | 190 | 150 | 22 | 80 | 22 | 25 | 166 | 15 | 20 |