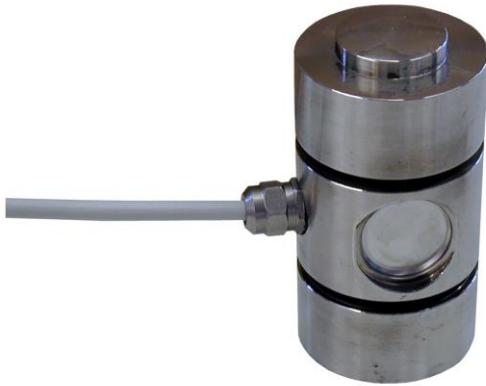


Load cells

Compression

CMH



Specially designed for industrial weighing of tanks, silos, vats, industrial ladles

Good characteristics of precision and robustness

Made of AISI 17-4PH stainless steel

Maximum resistance to shock and overload

Widely used in food, chemical, pharmaceutical and steel

Compensated temperature range can be extended to -10 to +90°C (option)

Operating temperature at -35 to +150°C (option) using cable for high temperature (200°C) (option)

TECHNICAL CHARACTERISTICS CMH

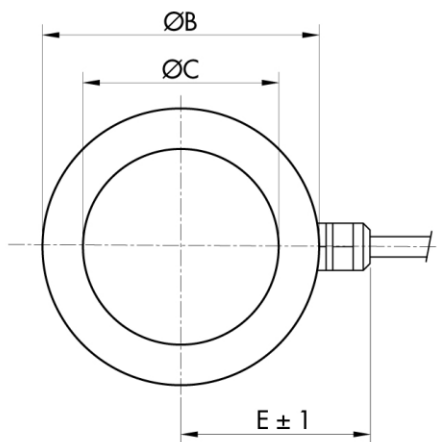
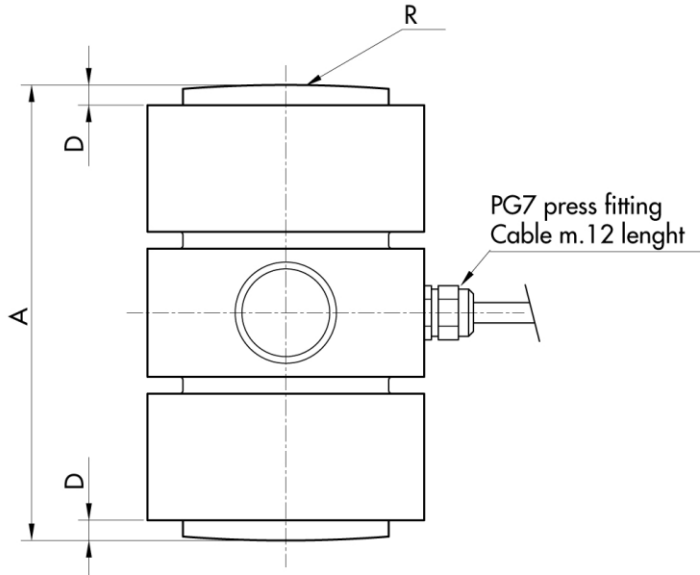
Rated load (R.L.):	2, 6, 10, 15, 20, 30, 40, 50, 60, 100, 150, 200 t
Rated output (R.O.):	2 mV/V
Combined error:	±0.1% of R.O.
Repeatability:	±0.05% R.O.
Creep (20 minutes):	±0.03% of R.L.
Temperature range:	-20 ÷ +65 °C
Compensated temperature range:	-10 ÷ +50 °C
Temperature effect (-10°C to +50°C) on zero balance:	±0.005% of R.O./°C
Temperature effect (-10°C to +50°C) on output:	±0.005% on output/°C
Recommended input:	5÷12 Vdc/Vac
Input resistance:	350 ± 20 Ohms
Output resistance:	350 ± 5 Ohms
Insulation resistance:	> 5000 M Ohms
Safe overload:	150% of R.L.
Ultimate overload:	> 300% of R.L.
Max load deflection:	0.3 mm
Degree of protection:	IP65
Material:	AISI 17-4PH Stainless steel
Electrical connection:	6 conductors shielded cable; length 6 m



Load cells

Compression

CMH

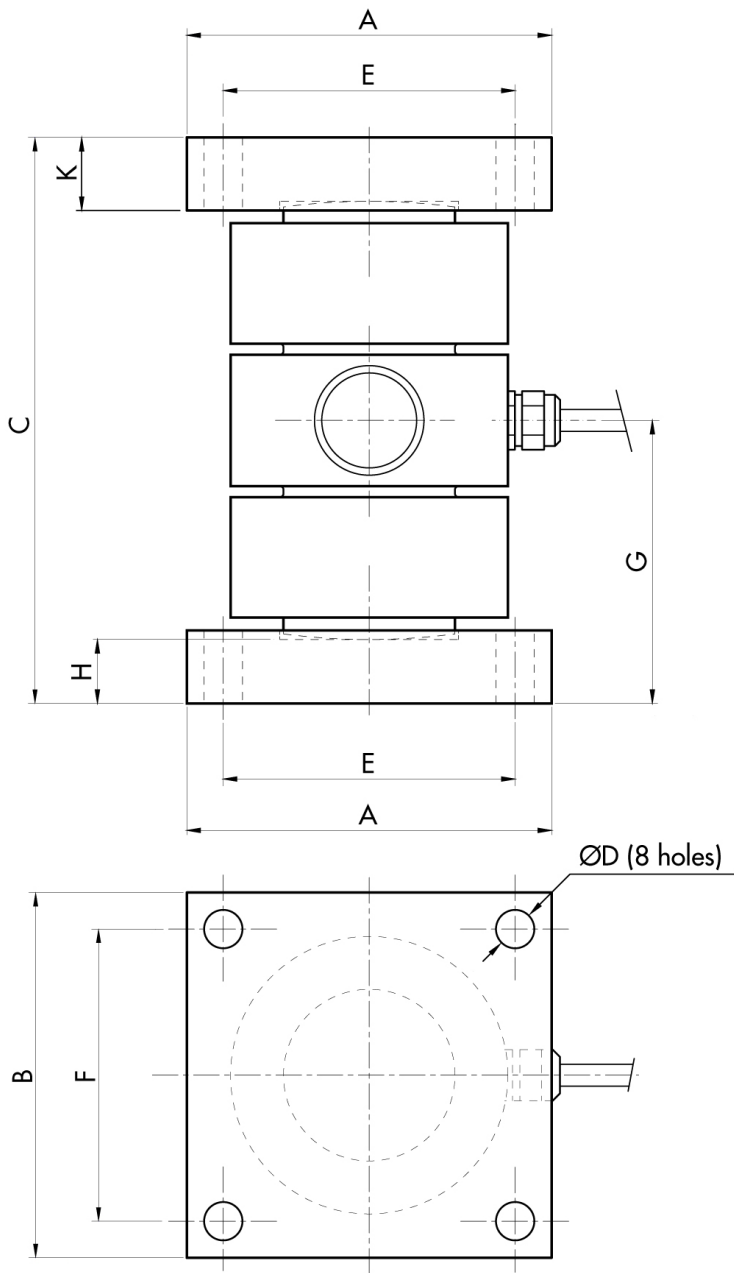


RANGE	A	ØB	ØC	D	E	R
2-10 t	104	52	30	6	42	180
20-30 t	105	52	30	8	42	200
40-60 t	120	76	47	8	53	180
100 t	135	82	58	8	56	400
150-200 t	160	125	87	8	77	400

Load cells

Compression

CMH



RANGE	A	B	C	ØD	E	F	G	H	K
2-10 t	80	80	120	6.5	68	68	60	8	10
20-30 t	100	100	140	10.5	80	80	70	17.5	20
40-60 t	100	100	160	10.5	80	80	80	17.5	23
100 t	120	120	200	10.5	100	100	100	32.5	35
150-200 t	150	150	250	12.5	125	125	125	45	49