

Load cells

Bending beam load cells

BBR



ATEX (optional)

Approved OIML R60 3000 divisions C Class

Made of stainless steel

Hermetically sealed, fully welded

IP68 Protection (EN 60529)

Designed for weighting tanks, hoppers, belts, platforms, systems, single cell, suspended load, automatic packaging machines

TECHNICAL CHARACTERISTICS BBR

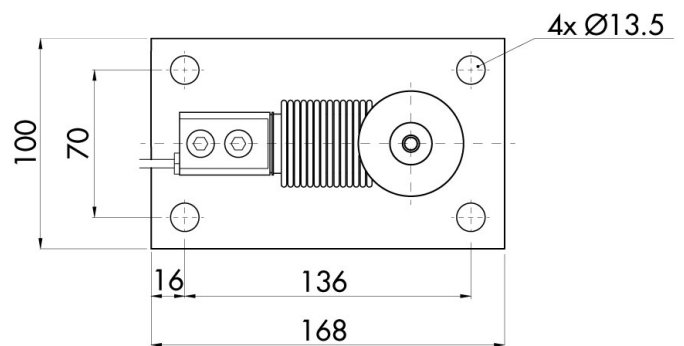
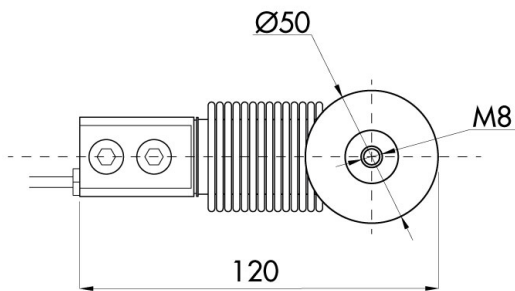
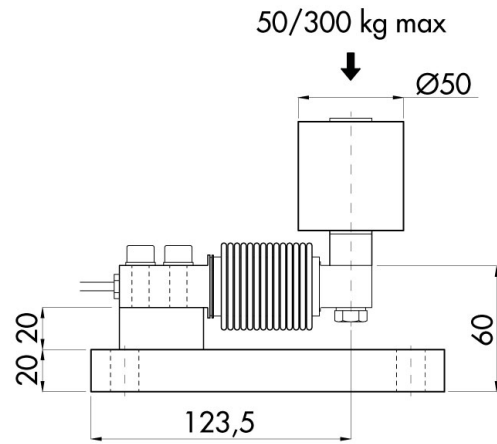
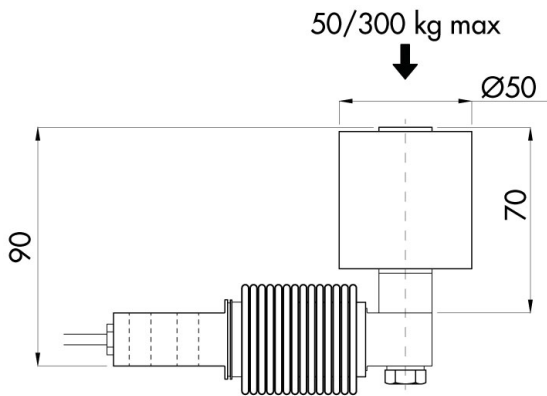
Rated load (R.L.):	5, 10, 20, 30, 50, 75, 100, 150, 200, 250, 300, 500 Kg
Combined error:	< ±0.017% of R.O.
Repeatability	< ±0.015% of R.O.
Creep (20 minutes):	< ±0.016% of R.L.
Safe overload:	150% of R.L
Maximum overload:	200% of R.L.
Recommended input:	5÷15 Vdc/Vac
Input resistance:	400 ± 20 Ohm
Output resistance:	400 ± 20 Ohm
Insulation resistance:	> 5000 M Ohm
Rated output (R.O.):	2 ± 0.1% mV/V (1)
Zero balance:	< ±2% of R.O.
Temperature range:	-20 ÷ +50°C
Compensated temperature range:	-10 ÷ +40°C
Temperature effect on zero balance:	< ±0.01% of R.O./5°K
Temperature effect on output:	< ±0.006% of output/5°K
Max load deflection:	0.2÷0.4 mm
Accuracy class:	3000 n. OIML
Degree of protection:	IP68
Electrical connection:	4 conductors shielded cable; length 3 m
(1) R.L. ≤ 20 kg: 2 ± 0,2%	



Load cells

Bending beam load cells

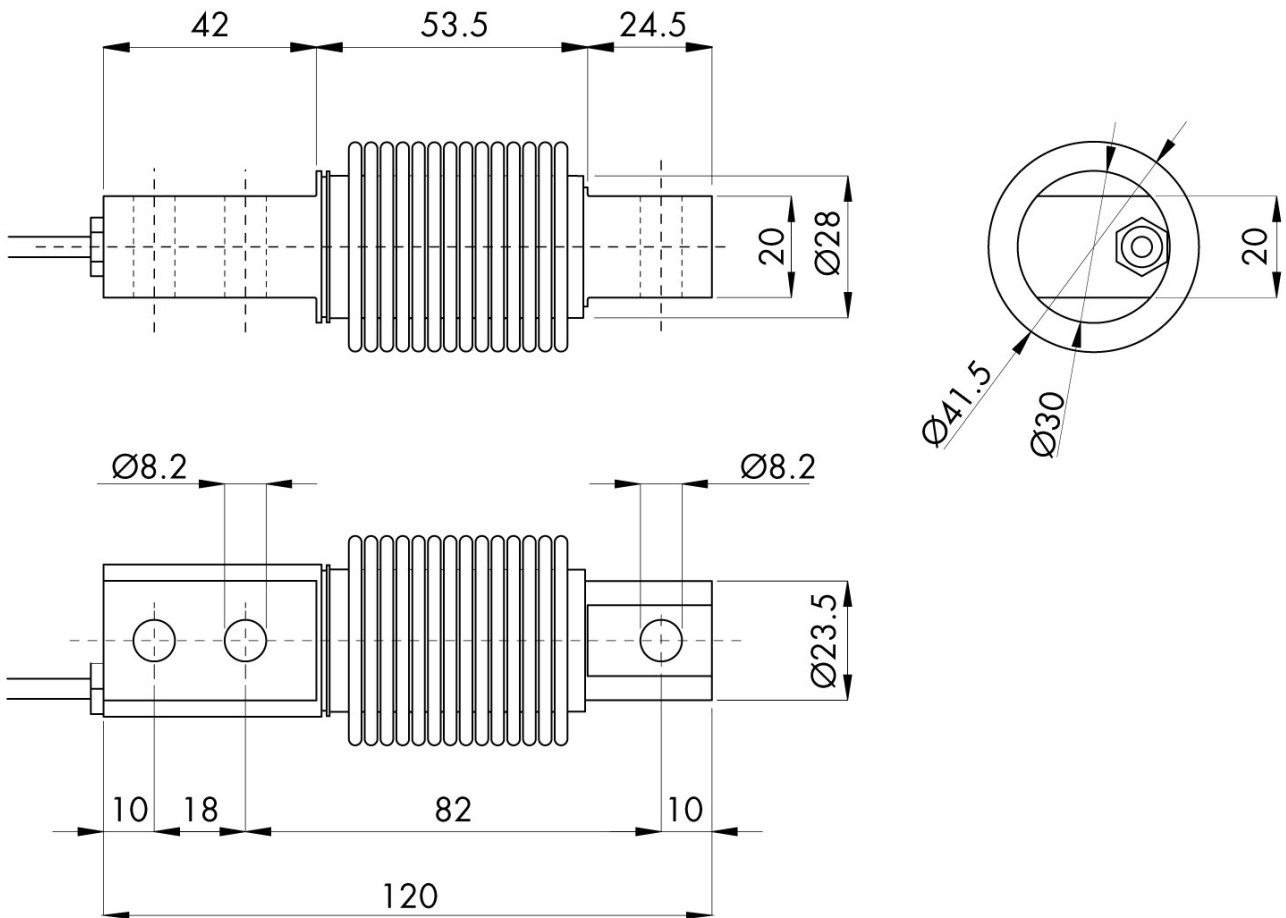
BBR



Load cells

Bending beam load cells

BBR



Electrical Connections

+Excitation	Green
-Excitation	Black
+Signal	Red
-Signal	White
Screen	Cable Shield