

Load cells

S-types

60001



Designed for industrial weighing of small tanks and hoppers

Excellent linearity and precision

300% overload capability

Made of nickel plated steel

Watertight protection for use in harsh environments

TECHNICAL CHARACTERISTICS 60001

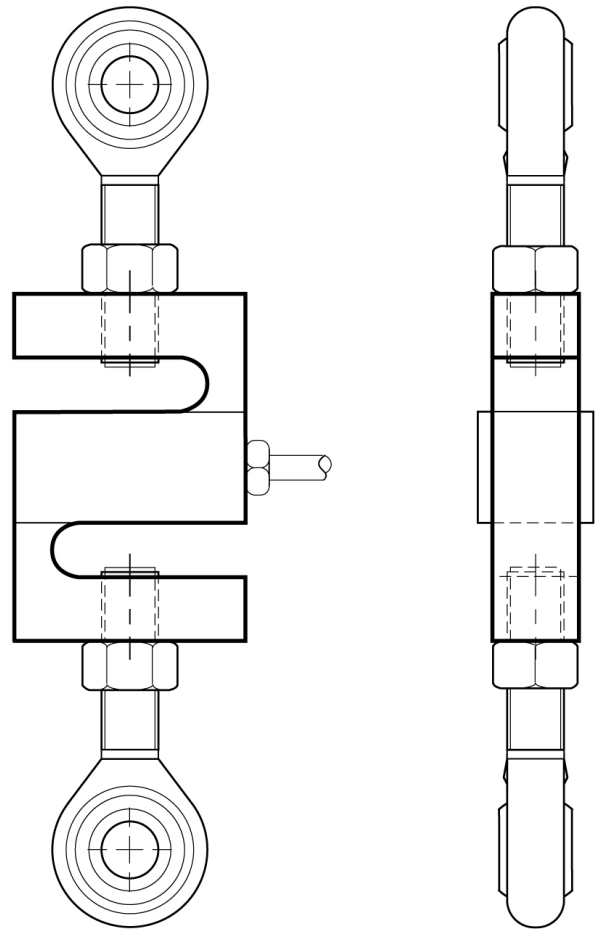
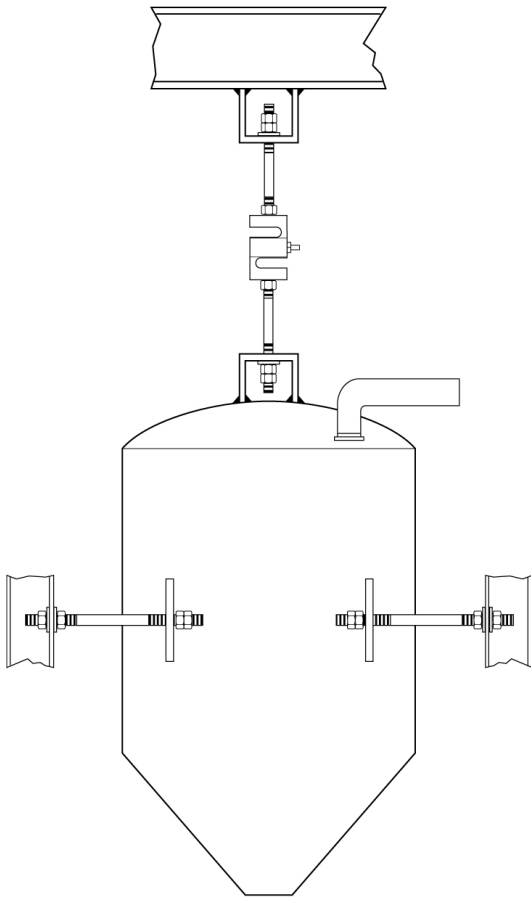
Rated load (R.L.):	50,100, 150, 250, 500 kg; 1, 2.5, 5, 10 t
Combined error:	< ±0.02% of R.O.
Repeatability:	< ±0.01% of R.O./5°K
Creep (20 minutes):	±0.017% of R.L.
Safe overload:	150% of R.L.
Maximum overload:	300 % of R.L.
Recommended input:	5÷15 Vdc/Vac
Input resistance:	343÷450 Ohm
Output resistance:	349÷355 Ohm
Insulation resistance:	> 1000 M Ohm
Rated output (R.O.):	3 mV/V
Zero balance:	< ±1% of R.O.
Temperature range:	-18 ÷ +65°C
Compensated temperature range:	-10 ÷ +40°C
Temperature effect on zero balance:	< ±0.0010% of R.O./°F
Temperature effect on output:	< ±0.0007% on output/°F
Max load deflection:	0.10÷0.15 mm
Degree of protection:	IP67
Material:	Nickel steel
Electrical connection:	4 conductors shielded cable; length 6 m
Precision class:	3000 n. OIML only for carrying capacity from 50 to 2500kg



Load cells

S-types

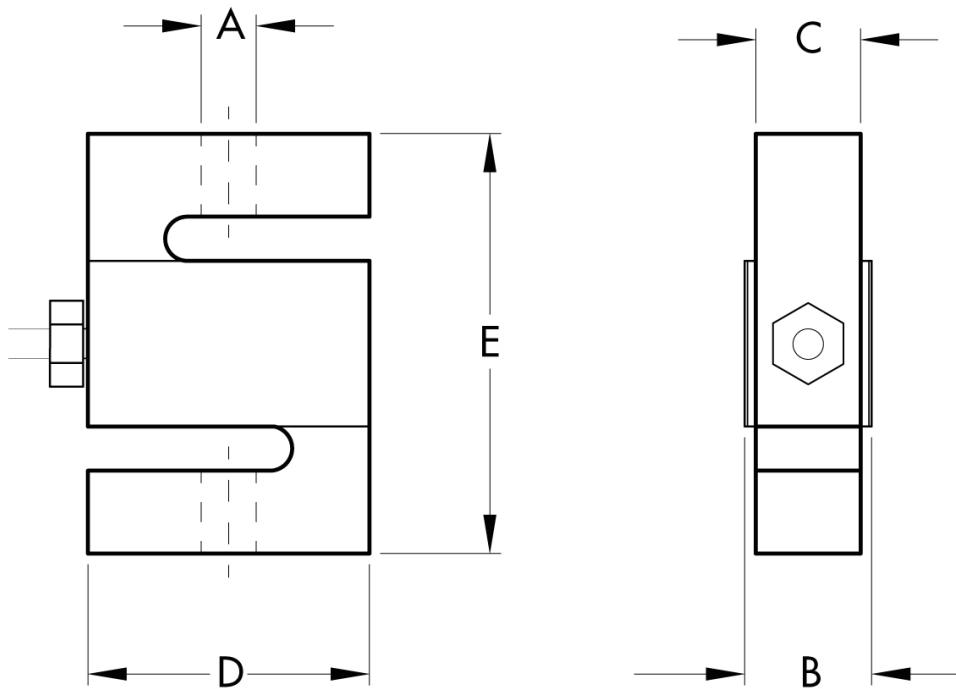
60001



Load cells

S-types

60001



Electrical Connections

+Excitation	Red
-Excitation	Black
+Signal	Green
-Signal	White
Shield	Cable Shield

CAPACITY	A	B	C	D	E
50-100 kg	M8x1.25-6H	16.5	12.7	50.8	63.5
250 kg -1 t	M12x1.75-6H	25.4	19.1	50.8	76
2.5 t	M20x1.5-6H	31.8	25.4	76.2	108
5 t	M20x1.5-6H	31.8	25.4	88.9	120.7
10 t	M20x2.0-6H	57.2	50.8	127.0	177.8